



عصر الحيوية
BIOERA

We specialize in establishing
Biopharmaceutical facilities through
consortium of local and global companies:
TURN KEY – From idea to production

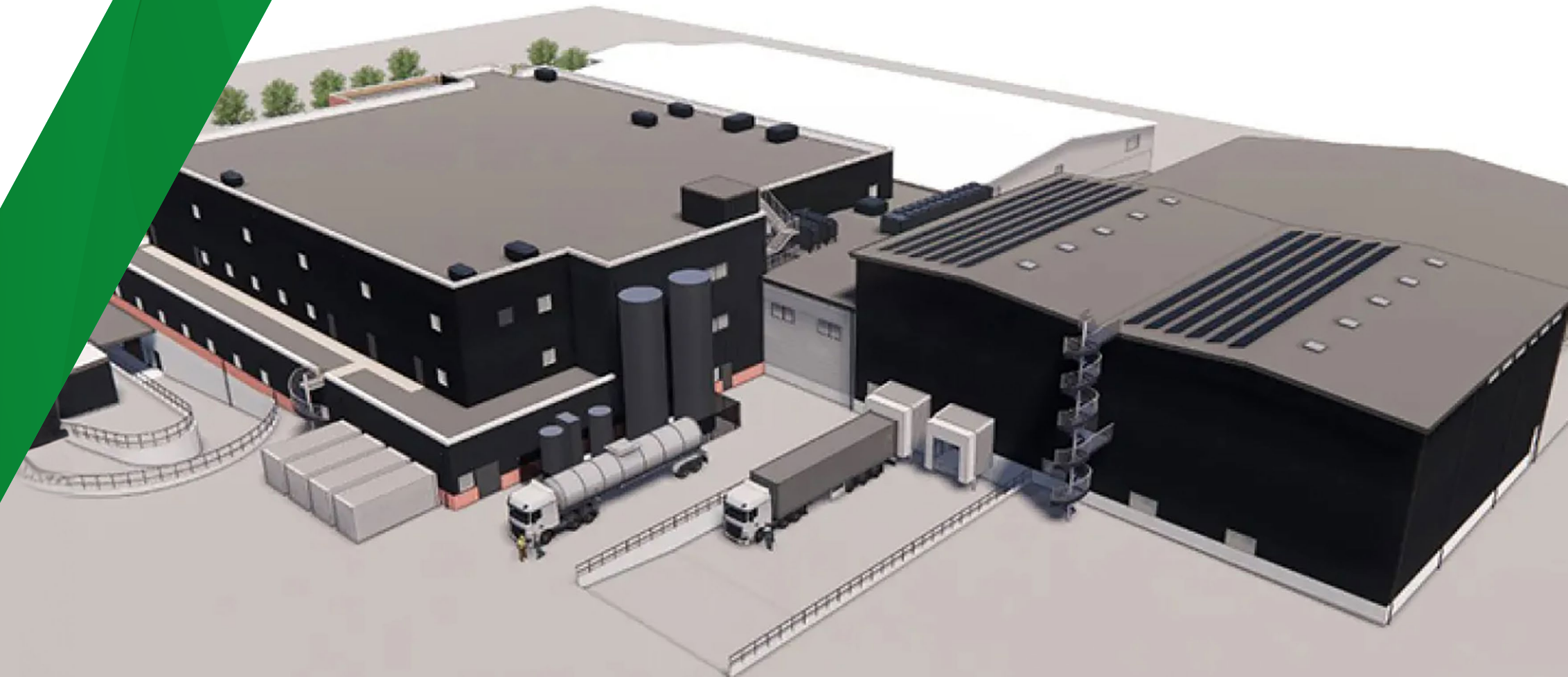
نحن متخصصون بتأسيس
مصانع الأدوية الحيوية من خلال
إتحاد شركات عالمية ومحلية
تسليم مفتاح – من الفكرة إلى الإنتاج

Who We Are

BIOERA is a leading Saudi firm headquartered in Riyadh, distinguished by its strategic global partnerships and expertise across multiple sectors.

In the biotech and pharmaceutical industries, **BIOERA** is specialized in delivering cutting-edge project management and engineering services for pharmaceutical factories. The company is renowned for its scientific and operational consulting, designed specifically for the biopharmaceutical sector, ensuring compliance to the highest industry standards. Drawing on its expertise and strong collaboration with global partners, we support clients in streamlining production, improving operational efficiency, and addressing the complexities of the biotech industry.

We feel proud while Serving a distinguished clientele across Saudi Arabia and the Gulf Cooperation Council (GCC), including the United Arab Emirates, Kuwait, Bahrain, Oman, and Qatar.



Our Services

From Idea to Production Turn Key Solution



Leading provider of engineering technologies for life sciences.



Pharma and Biotech consultancy solutions



Engineering consultancy



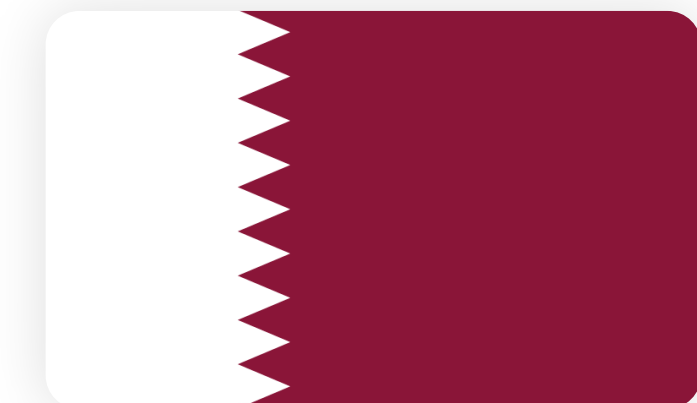
Biotech and Pharma Business development



AI-Driven knowledge management for manufacturing excellence

Serving the GCC Region

GCC is set up to undertake complete construction activities for industrial projects in the oil & gas, petrochemical, Pharmaceutical and biotechnology manufacturing other industrial sectors and related infrastructure fields, including power & water. Based in Riyadh, BIOERA has the capability to work throughout all areas of Saudi Arabia and other GCC countries. Construction services comprise complete coverage of civil, structural, mechanical, electrical and instrumentation disciplines.



Our Strategic Alliances

Project delivery via CONSORTIUM



Our Strategic Partner

BIOERA's Global Strategic Partner

KeyPlants is a global company based in Sweden and a sister company of the German Dorsche Group. It offers comprehensive engineering services, specializing in prefabricated plant design and construction, project management, and facility design for factories, R&D, and innovation centers. KeyPlants provides cutting-edge engineering solutions for the life sciences and advanced technology industries.

The KeyPlants team has successfully managed and executed over 220 industrial projects globally, for the leading companies such as AstraZeneca, MSD, Eli Lilly, GSK, Teva, Galderma, and Saudi Bio. Their proven expertise ensures the delivery of world-class solutions across the biopharmaceutical and life sciences sectors.

220+ Projects
Delivered



www.keyplants.com

Experience and Trust

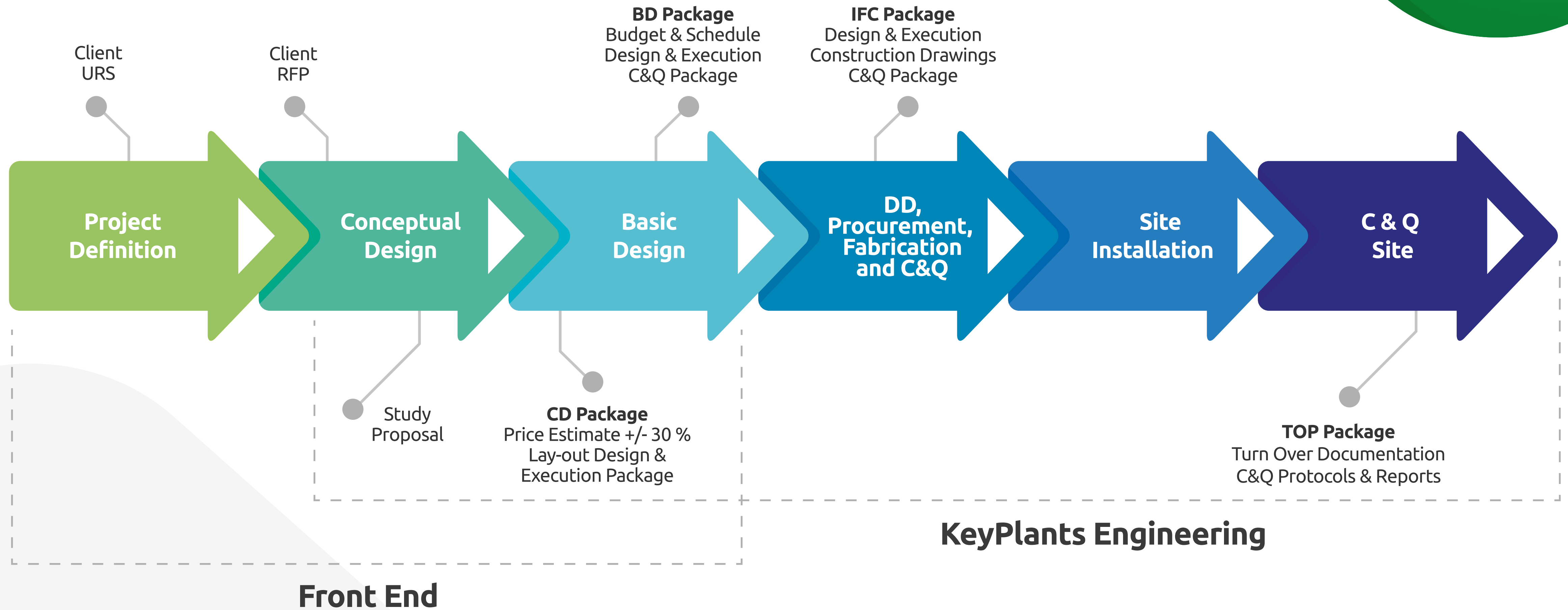
Based on the tradition of industrial innovation in Sweden, KeyPlants became pioneers bringing the modular facility concept to the life science industry. We have developed our ideas and solutions over the years, in close collaboration with leading Big Pharma companies. Today, we partner with several of the top 10 Big Pharma and many regional companies in the world.



Global Experience



KeyPlants Project Execution



Functions Required to Establish Pharmaceutical Manufacturing Operations

Customer	Business Case	Financing	Product Licencing and Technology Transfer Partner
	Organization and Human Resources	Quality System and Training	Regulatory
KeyPlants with Partners	Design	Production Facility Build	Site Infrastructure and Buildings
	<ul style="list-style-type: none"> ❖ Concept Design ❖ Basic Design ❖ Detailed Design 	<ul style="list-style-type: none"> ❖ Building ❖ Utilities ❖ Process Equipment ❖ Automation 	<ul style="list-style-type: none"> ❖ Infrastructure ❖ Warehouse ❖ QC Lab ❖ Office and Admin
	Additional services from KeyPlants	Technology Transfer Support	Process / Product Validation Support

KeyPlants' Design Platforms:

MBS™ - Modular Bio Solutions and MAS™ - Modular Aseptic Solutions

KeyPlants' design platforms have been developed to simplify the construction of turnkey biopharmaceutical and aseptic filling pharmaceutical facilities. A flexible facility solution for rapid deployment of new biomanufacturing and aseptic filling facilities.

Speed

- ❖ Less design efforts – an Alignment Study saves time for Engineering
- ❖ 4 months delivery time for prefabricated clean rooms
- ❖ 12 months delivery time for a complete facility for commercial production

Flexibility

- ❖ Configurable to any biomanufacturing or aseptic filling process
- ❖ Ability to add on unit operations such as fill finish
- ❖ Expandable to manage increased demand forecast
- ❖ Mobile to enable re-location

Predictability

- ❖ Fabrication in workshop secures predictable quality and timeline
- ❖ Fixed price on fixed scope after Basic Design

GCC Projects

Aseptic Filling Facility, Saudi Bio - Insulin Plant



GCC Projects

Vaccines manufacturing facility - Saudi Arabia Vaccine Industrial Company



Our Strategic Partner



**Global Biotech
Consultants**

A global consultancy dedicated to advancing biotechnology, working alongside premier biotech companies to launch new products, achieve operational success, and accelerate scientific breakthroughs.

With over a decade of specialized experience, Zyme Biotech has become an essential partner for top biotech firms, offering strategic insights and robust solutions that drive growth and innovation. More than just consultants, Zyme Biotech serves as innovation partners, delivering cutting-edge solutions throughout the entire biotech journey—from research and development to commercialization

 **zyme** **Four Step Process**
Biotech

Step 01

Discover & Define

Our experts collaborate with you to understand your unique needs and challenges.

- Review of your current operations and systems.
- Identify key areas of improvement.
- Customised Action Plan.

Step 02

Strategize & Plan

Our team develops a strategic plan that aligns with your business goals and the latest industry standards.

- Design a detailed roadmap with strategic initiatives.
- Integrate innovative technologies.
- Measurable goals for implementation.

Step 03

Implement & Optimize

Deployment of strategic plans with hands-on assistance, ensuring that every step is executed with precision.

- Provide onsite and remote support.
- Training and development.
- Guarantee successful execution.

Step 04

Evaluate & Enhance

Refine and optimize strategies for sustained success and future scalability

- Implement feedback mechanisms.
- Use data-driven approaches to measure success.
- Ongoing compliance.



Our Strategic Partner

Inotek
Pioneering Solutions For You

**Revolutionizing the pharma industry,
Building a healthy future**

Inotek is process-driven company with an altruistic aim to pioneer turnkey solutions in the pharmaceutical industry through constant innovation and responsible partnerships.

www.inotek.co.in

Our Strategic Partner

VALGENESIS™

The end-to-end digital validation platform

Connect design, qualification and production with the unified digital platform for life sciences. Drive new levels of digital transformation, manufacturing intelligence, total compliance, and corporate efficiency.

40,000+

ValGenesis software users

450+

GMP sites using ValGenesis applications

100,000+

GMP systems validated with ValGenesis VLMS

30

of the top 50 global life sciences companies use ValGenesis

20

years of experience and growth



Our Strategic Partner AI-solutions



Revolutionizing Pharmaceutical Compliance with AI-Powered Knowledge Management

AskGxP is an AI-powered knowledge management platform designed specifically for the pharmaceutical industry. It helps streamline operations by automating the generation of compliant documents such as SOPs (Standard Operating Procedures) and research protocols. The platform offers instant AI-driven insights, chat assistance for expert guidance, and trend analysis to support decision-making.

www.askgxp.com

Our Strategic Partner



JADWA Contracting Co

JADWA Contracting Company is now one of the leading construction company in the Kingdom of Saudi Arabia, with several major projects in its portfolio. The Company has built a reputation for being efficient and reliable

320+ Built Residential

80+ Built Factories

185+ Built Commercial

www.jadwacompany.com



Our Local Engineering Consultant Partner



Top 5 Engineering offices in KSA
Approved by Modon

Innovative Solution Provider Client- Centric
Approach Technical Profeciency

Quality Assurance and Safety Standards





عصر الحيوية
BIOERA

Get in Touch

Eng. Faris Khaled, MBA

Industrial Engineer and CEO

☎ +966 53 018 1769 ✉ faris@bioera.sa

The Gate Centre, Othman bin Affan Rd,
Office # 13-15, Riyadh, Saudi Arabia

Projects Management



+966 53 556 4041
gm@bioera.sa



+971 54 458 0846
km@bioera.sa



+91 9790 375 833
ravi@bioera.sa